



# SOURCE MAKER

[www.lightingballoons.com](http://www.lightingballoons.com)

**2017 Product Handbook**

[www.sourcemakerled.com](http://www.sourcemakerled.com)



## About Us

Sourcemaker has been the leading innovator of balloon lighting technology in the film industry for over 15 years. We have used the same experience to design a suite of LED products to help filmmakers solve problems and work efficiently. We work closely with gaffers, DP's and crew members to help perfect different ideas and designs, whether it's a custom balloon, or specialty LED light.

Not only does Sourcemaker have the highest quality lighting balloons on the market, we also have the largest lighting balloon inventory in the film industry. And it's still growing!

Sourcemaker is in the unique position to supply lighting balloons to every size production, from student film to high-budget features. Sourcemaker offers the same quality service with a personal touch for every production.

# TABLE OF CONTENTS

**01** **Lighting Balloons**  
*Hybrid, HMI, Tungsten, Vapors  
Clouds : Diffusion and Ambient  
Zero Gravity and Umbrella Balls*

**02** **LED Blankets**  
*Sizes and color temperatures  
Optional accessories  
Dimmer and power options*

**03** **LED Tubes**  
*Hybrid tube sizes  
Kino retrofit kits  
Adapters and accessories*

**04** **LED Ribbon**  
*Types and Specs  
Dimmers and Power  
Accessories*



# Lighting Balloons

Sourcemaker has been the leading innovator of lighting balloons in the film/television industry for over 15 years. All of our balloon shapes and outputs are optimized for use on set. Whether it's an interior with low ceilings, or a sports arena, there's a balloon designed to solve every problem.

The patented cube shape allows for full light control using modular blackout skirts, and is the most efficient shape when it comes to volume and lift. Every balloon can be floated with helium, or rigged to a fixed position, such as a condor or studio grid.

Visit [www.lightingballoons.com](http://www.lightingballoons.com) for the latest balloon light innovations



*Quick and Easy to Rig*



*Green Screen & Custom Skirts*



*Low Profile Series*



*Modular Cube Shape*

# Lighting Balloons : **Hybrid**

To the right is a quick list of the available balloon sizes, along with the most widely used bulb configurations and max flying height.

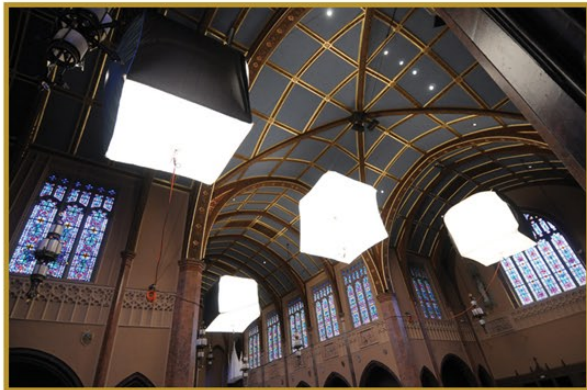
Each balloon can take any combination of Tungsten and HMI bipost bulbs. The smaller balloons use 2 bulbs, while the largest holds 8.

Tungsten Bulb Options :

5k | 2.5k | 2k | 1k | 650w

HMI Bulb Options :

4k | 2.5k | 1.2k | 800w | 575w



## *Cubes*

### 12' x 14' Cube

28k : 8kH + 20kT (100')

27k : 12kH + 15kT (100')

26k : 16kH + 10kT (100')

### 10' Cube

18k : 8kH + 10kT (75')

15k : 5kH + 10kT (75')

### 8' Cube

15k : 5kH + 10kT (40')

6.4k : 2.4kH + 4kT (75')

### 6.5' Cube

9k : 4kH + 5kT (50')

7.5k : 2.5kH + 5kT (50')

3.2k : 1.2kH + 2kT (50')

### 8' x 8' x 4' Cube (low profile)

7.5k : 2.5kH + 5kT (20')

3.2k : 1.2kH + 2kT (25')

## *Tubes*

### 12' x 26' Tube

36k : 16kH + 20kT (100')

30k : 10kH + 20kT (100')

### 8' x 18' Tube

18k : 8kH + 10kT (65')

15k : 5kH + 10kT (65')

### 7' x 16' Tube

15k : 5kH + 10kT (10')

6.4k : 2.4kH + 4kT (15')

### 4' x 6' x 15' Tube

6.4k : 2.4kH + 4kT (35')

*Common Output : Bulb Configuration (Max Flying Height)*

# Lighting Balloons : HMI

To the right is a quick list of the available balloon sizes, along with the most widely used bulb configurations and max flying height.

Sourcemaker is the pioneer of the remote igniter system. This cuts down tremendously on weight, allowing HMI balloons to fly higher while using a smaller footprint.

We offer balloons that can take anywhere from one to eight HMI bulbs, with a max balloon output of 32k

HMI Bulb Options :

4k | 2.5k | 1.2k | 800w | 575w



## *Cubes*

### 12' x 14' Cube

24k : (6) 4kH (100')

16k : (4) 4kH (100')

### 10' Cube

16k : (4) 4kH (35')

8k : (2) 4kH (80')

### 8' Cube

10k : (4) 2.5kH (50')

4.8k : (4) 1.2kH (75')

### 6.5' Cube

8k : (2) 4kH (50')

5k : (2) 2.5kH (50')

4k : (1) 4kH (50')

### 8' x 8' x 4' Cube

5k : (2) 2.5kH (20')

2.4k : (2) 1.2kH (25')

## *Tubes*

### 12' x 26' Tube

32k : (8) 4kH (50')

16k : (4) 4kH (100')

### 8' x 18' Tube

16k : (4) 4kH (50')

10k : (4) 2.5kH (35')

### 7' x 16' Tube

8k : (2) 4kH (35')

5k : (2) 2.5kH (40')

### 4' x 6' x 15' Tube

4.8k : (4) 1.2kH (35')

5k : (2) 2.5kH (40')

*Common Output : Bulb Configuration (Max Flying Height)*

# Lighting Balloons : Tungsten

To the right is a quick list of the available balloon sizes, along with the most widely used bulb configurations and max flying height.

Sourcemaker's velcro skirting system gives you full control and flexibility. The square shape of our envelopes allows you to quickly velcro blackout panels to each face, or use the "flop down" option to extend further past the bottom of the balloon.

Tungsten Bulb Options :

5k | 2.5k | 2k | 1k | 650w



## *Cubes*

### 12' x 14' Cube

30k : (6) 5kT (100')

20k : (4) 5kT (100')

### 10' Cube

20k : (4) 5kT (75')

12k : (12) 1kT (75')

### 8' x 8' Cube

20k : (4) 5kT (35')

8k : (4) 2kT (50')

### 6.5' Cube

10k : (2) 5kT (50')

8k : (8) 1kT (50')

### 8' x 8' x 4' Cube

10k : (2) 5kT (20')

4k : (2) 2kT (30')

## *Tubes*

### 12' x 26' Tube

40k : (8) 5kT (75')

24k : (24) 1kT (100')

### 8' x 18' Tube

20k : (4) 5kT (50')

16k : (16) 1kT (75')

### 7' x 16' Tube

16k : (16) 1kT (35')

8k : (8) 1kT (45')

### 4' x 6' x 15' Tube

10k : (2) 5kH (35')

8k : (8) 1kH (40')

*Common Output : Bulb Configuration (Max Flying Height)*

# Lighting Balloons : Sodium Vapor & Metal Halide

To the right is a quick list of the available balloon sizes, along with the most widely used bulb configurations and max flying height.

Sodium Vapor or Metal Halide bulbs can be used in any of our lighting balloons. These bulbs allow you to match existing industrial sources, such as those used in public parks or warehouses.

Sodium and Metal Halide Bulb Options :  
1k | 400w



## *Cubes*

12' x 14' Cube

6k : (6) 1kT (100')

10' Cube

6k : (4) 1kT (75')

4k : (4) 1kT (75')

8' x 8' Cube

4k : (4) 1kT (35')

2k : (2) 1kT (50')

6.5' Cube

4k : (4) 1kT (30')

2k : (2) 1kT (50')

8' x 8' x 4' Cube

2k : (2) 1kT (20')

## *Tubes*

12' x 26' Tube

12k : (12) 1kT (75')

8k : (8) 1kT (100')

8' x 18' Tube

8k : (8) 1kT (50')

4k : (4) 1kT (75')

7' x 16' Tube

4k : (4) 1kT (35')

2k : (2) 1kT (45')

4' x 6' x 15' Tube

4k : (4) 1kT (15')

2k : (2) 1kT (25')

*Common Output : Bulb Configuration (Max Flying Height)*



# Lighting Balloons : **Grip and Ambient Clouds**

## Grip Clouds

The cloud balloon was designed and perfected alongside Anthony Vietro, a long time California-based grip. Each 12' x 12' and 20' x 20' cloud has a multitude of rig points and available diffusions.

### Available Covers

Digi/Chroma Green

Digi/Chroma Blue

Full-Stop Diffusion

Half-Stop Diffusion

... custom diffusions available!



## Ambient Clouds

The lighting cloud is a high flying, low-profile tungsten source. Envelopes available with black/reflector sides and top, as well as drop down skirting systems.

HMI, Vapor and LED sources available upon request

12' x 12' Cloud  
9k : (9) 1kT (30')

20' x 20' Cloud  
16k : (16) 1kT (50')



# Lighting Balloons : **Zero Gravity & Umbrella Balls**

## Zero-Gravity

Zero-G balloons are the smallest and narrowest balloons in the industry. To achieve this, each size is designed to carry the weight of just the envelope only. When the cable weight is tied off, the balloon will rest itself against the ceiling or flag.

6' x 6' x 3'

2.6k @ 110v : (4) 650kT

4k @ 220v : (4) 1kT

6' x 6' x 4'

4k Tung : (2) 2kT

2.4k HMI : (2) 1.2kH

3.2k Hy : (1) 1.2kH + 2kT



## Umbrella Balls

A 4' round, structural light that can take any (2) bipost bulbs. Half black or full white diffusion options. Custom covers and diffusions available.

Can take any (2) lower wattage HMI, Tungsten, or Vapor Bulbs

4' Diameter

4k Tung : (2) 2kT

2.4k HMI : (2) 1.2kH

3.2k Hy : (1) 1.2kT + 2kT



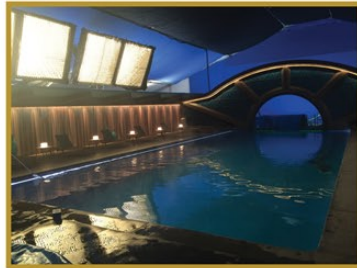


## LED Blankets

Sourcemaker's patented LED Blankets are an all-in-one lighting solution that sets up easily and adjusts fast. Our blankets are among the most versatile lighting options in the industry. Each blanket uses color correct LED ribbon to achieve a wide range of clean color temperatures, ranging from 2675K-6010K. Each LED ribbon strip is encased in a life extending highly durable plastic and can be removed from the blanket. With the included harness, each strip can be used separate from the blanket as an individual light source.

Sourcemaker LED Blankets are ideal for difficult, hard to light areas. All blankets are modular, and can be attached to each other and DMXed to create larger sources.

Sourcemaker LED blankets come in various sizes, and are designed to fit inside standard grip equipment. Accessories are available, including diffusion, skirts, mounting brackets and snapgrids.



# LED Blankets



## 8' x 8'

Dimensions : 92" x 91"  
Depth : .9"  
Weight : 18  
Voltage : 24v  
Watts : 1840w  
CRI : 95+  
Color Temp : 2675K - 6010K  
Dimmer : Dimcase



## 4' x 8'

Dimensions : 92" x 43"  
Depth : .9"  
Weight : 9.5 lbs  
Voltage : 24v  
Watts : 920w  
CRI : 95+  
Color Temp : 2675K - 6010K  
Dimmer : Dimcase Mini



## 4' x 4'

Dimensions : 46.75" x 42.75"  
Depth : .9"  
Weight : 4.5 lbs  
Voltage : 24v  
Watts : 460w  
CRI : 95+  
Color Temp : 2675K - 6010K  
Dimmer : 30A Dimmer w/ 25A PSU

\*All blankets available in full tungsten, full daylight, hybrid or RGB + Hybrid configurations



## 2' x 4'

Dimensions : 24.75" x 43"  
Depth : .9"  
Weight : 2 lbs  
Voltage : 24v  
Watts : 230w  
CRI : 95+  
Color Temp : 2675K - 6010K  
Dimmer : 30A Dimmer w/ 11.67A PSU



## 2' x 2'

Dimensions : 23.75" x 23"  
Depth : .9"  
Weight : 1 lb  
Voltage : 24v  
Watts : 116w  
CRI : 95+  
Color Temp : 2675K - 6010K  
Dimmer : 30A Dimmer w/ 6.67A PSU



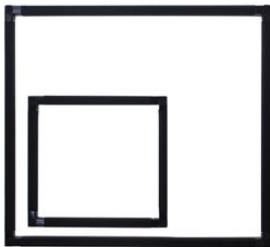
## 1' x 2'

Dimensions : 12.5" x 23"  
Depth : .9"  
Weight : .5 lbs  
Voltage : 24v  
Watts : 54w  
CRI : 95+  
Color Temp : 2675K - 6010K  
Dimmer : 30A Dimmer w/ 5A PSU

\*All blankets available in full tungsten, full daylight, hybrid or RGB + Hybrid configurations

# LED Blankets : Accessories

Sourcemaker's blankets use a specially designed, low-profile frame and diffusion system with the exact depth needed to achieve a smooth, non-specular source that's desired by today's film professionals. All blanket sizes can use standard grip frames and hardware.



Quick Lock Frame



Diffusion



Snap-Grid



Frame Bracket

# LED Blankets : Dimmers



## 30A Dimmer

- Can control (1) 4x4 or smaller blanket
- Smooth - accurate - flicker free
- Pinpoint low end dimming
- Independent daylight/tungsten adjustment
- Local or DMX control
- OLED digital display

Max Amperage : **30A**  
Channels : **2**  
Input : **DC 12v-24v**  
DMX : **DMX-512/1990 Digital**



## Dimcase Mini

- 50A capacity - 8 channels x 6.25A @ 24v
- Can control (1) 4x8, (2) 4x4 or (4) 2x4 blankets
- Easy DMX addressing via digital display
- Breakouts available for endless applications
- Robust rolling case with telescoping handle

Max Amperage : **50A**  
Channels : **8**  
Input : **DC 12v-24v**  
DMX : **DMX-512/1990 Digital**



## Dimcase

- 100A capacity - 16 channels x 6.25A @ 24v
- Can control (1) 8x8 : (2) 4x8, or (4) 4x4's
- Easy DMX addressing via digital display
- Ideal for all RGB + Hybrid blankets
- Breakouts available for endless applications
- Robust rolling case with telescoping handle

Max Amperage : **100A**  
Channels : **16**  
Input : **90V to 305V AC**  
DMX : **DMX-512/1990 Digital**



# LED Tubes

Sourcemaker's innovative LED tubes are the most efficient tube on the market. Twin circuit, High CRI 4' and 2' tubes are endlessly scalable and also adjustable with three diffusion strengths. The dual driver system gives you independent control of daylight and tungsten channels, allowing you to dial in any color temperature between 3100K - 6100K.

Full triac compatibility gives you the freedom to use any readily available 120v dimmer, including RatPac, etc. At a .95 power factor rating and over 100 lumens per watt, each color channel of a 4' tube draws only .3A.

- Independent control of daylight and tungsten channels
- Most efficient bi-color tube on the market @ 104 lumens per watt
- 95+ CRI
- Full triac compatibility
- Diffused, half diffused and clear lens options available
- ETL approved for plug and play applications



*Mechanical And Electrical Specifications*

SERIES	INPUT VOLT	POWER FACTOR	SINGAL CHANNEL AMPS	DUAL CHANNEL AMPS	FIXTURE LIFE	DIMMING	ENVIRONMENT	CLIMATE	INDOOR / CERTIFICATIONS	INDOOR / OUTDOOR CERTIFICATIONS
<i>Hybrid LED Tubes</i>	<i>120V AC 50/60Hz</i>	<i>0.95</i>	<i>0.33</i>	<i>0.59</i>	<i>50,000 Hours</i>	<i>Triac</i>	<i>Indoor / Outdoor</i>	<i>Dry / damp / Wet</i>	<i>UL For hardwire</i>	<i>C-ETL-us for plug and Play Application</i>



# LED Tubes : Kino Retrofit and Adapters

Sourcemaker's Hybrid LED tubes are the ideal retrofit to bring life back to any Kino fixture. Our dual driver system gives you independent control of the daylight and tungsten channels, enabling you to dial in any high CRI color temperature between 3100K and 6100K.

Simply swap the bulbs, take the florescent ballast out of line, and use your existing fixture, electrical harness and header cable with the provided Sourcemaker adapter.

Use any standard 110v, two channel triac dimmer on set, such as ETC or RatPac to achieve smooth, low-end dimming. Inline dual channel hand squeezers are available for a quick setup option

- Uses existing fixture, electrical harness and header cable
- Independent control of daylight and tungsten channels
- Most efficient bi-color tube on the market @ 104 lu
- Full triac compatibility
- Diffused, half diffused and clear lens options available
- ETL approved for plug and play applications.



4 pin - 16 pin

*For 4x1 and 2x1 Fixtures*



9 pin - 16 pin

*For 4x2 and 2x2 Fixtures*



16 pin - Dual Edison

*Two channel splitter used with all fixtures and adapters*



16 pin Dual Color Dimmer

*Two channel dimmer for independant tungsten and daylight control*

# LED Ribbon

Sourcemaker's LED ribbon is the perfect building block for set lighting technicians. Used in our popular blanket kits, Sourcemaker ribbon provides high output, low power, color correct LED light. Each ribbon strip is able to achieve a wide range of clean color temperatures, ranging from 2675K-6010K. Our LED ribbon comes in 5m rolls or encased in a life extending highly durable plastic. Sourcemaker makes available a variety of connection solutions allowing for a wide range of individual light sources.

Have questions about lighting with LED ribbon? Our experienced staff can assist you in finding an efficient, cost-effective package of power supplies and dimmers that perfectly fit your application.

- Cinema quality High CRI (95+)
- Color balanced (No magenta or green spike)
- 120 Diodes per meter of ribbon
- Available in 12v or 24v
- Modular ribbon that can be DMXed to create larger sources
- Sealed and secured individual ribbon strips available
- 3M adhesive backing for secure installation
- Custom lengths available upon request



Description	Voltage	Color Temp	LED Size	LEDs/M
Sourcemaker High CRI (95+) : Hybrid	24/12	2700°K - 6200°K	3528	120
Sourcemaker High CRI (95+) : Tungsten	24/12	2700°K	3528	120
Sourcemaker High CRI (95+) : Daylight	24/12	6200°K	3528	120
Sourcemaker High CRI 3x : Hybrid	24/12	2700°K - 6200°K	3528	360 per 1m
Sourcemaker High CRI 6x : Hybrid	24/12	2700°K - 6200°K	3528	180 per .25m
Sourcemaker RGB + Amber	24/12	N/A	5050	60

# LED Ribbon : Decoders, Power Supplies and Accessories



Visit [www.sourcemakerLED.com](http://www.sourcemakerLED.com) to view our full line of LED dimmers and accessories, such as...

High Frequency Decoders  
12v / 24v Power Supplies  
City Theatrical Dimming Suite  
LED Link Sticks

**SOURCE M A K E R**